

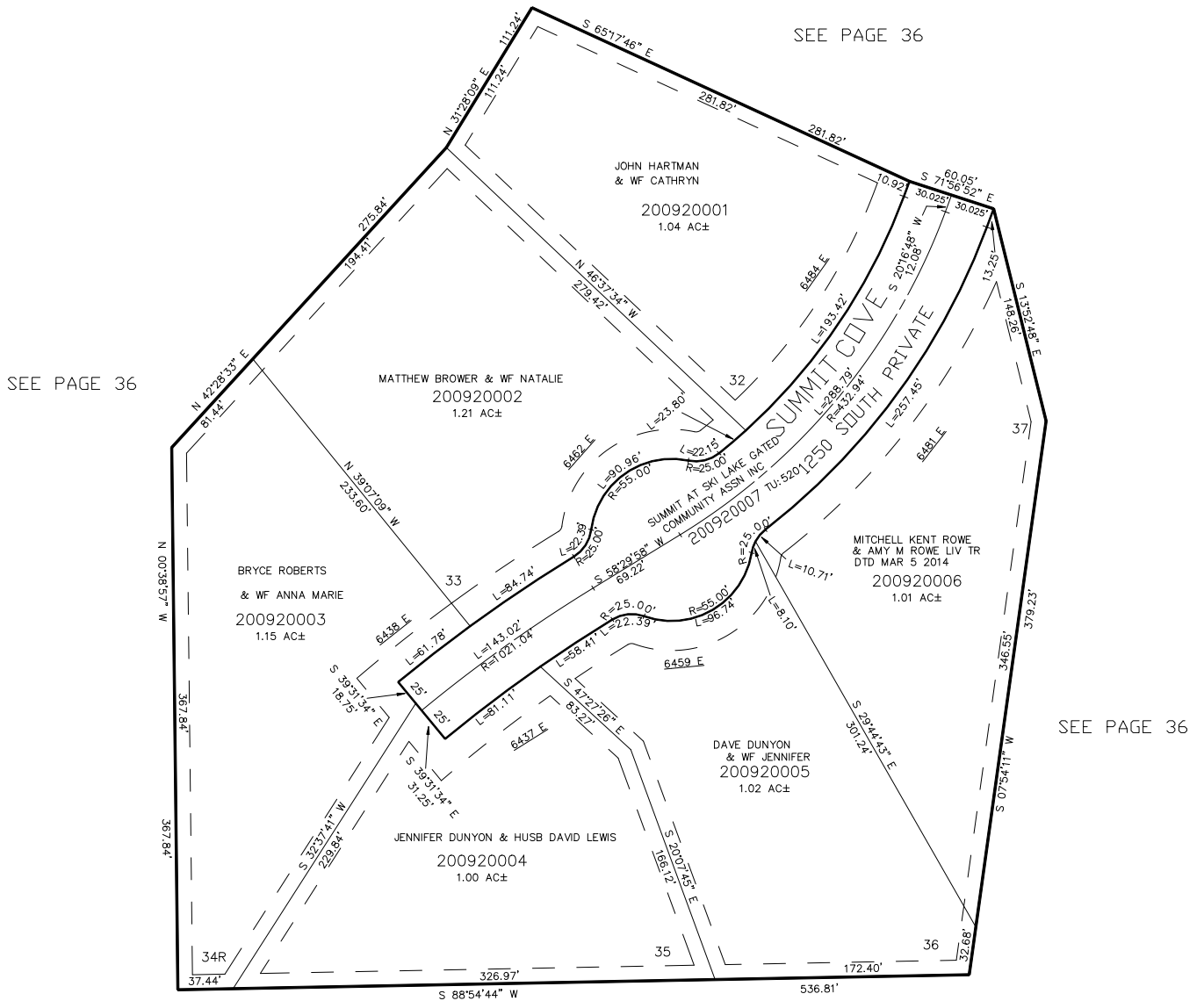
PART OF THE NW.1/4, OF SECTION 24, T.6N., R.1E., S.L.B. & M.

THE SUMMIT AT SKI LAKE No. 8

IN WEBER COUNTY

TAXING UNIT: 58, 520

SCALE 1" = 60'



10' UTILITY & DRAINAGE EASEMENTS EACH
SIDE OF PROPERTY LINES AS INDICATED
BY DASHED LINES EXCEPT AS OTHERWISE
SHOWN.

SEE PAGE 36

FOR COMPLETE ENG DATA SEE
ORIGINAL DEDICATION PLAT IN
BOOK 61, PAGE 43 OF RECORDS.

FOR TAX PURPOSES ONLY